

IMPORTANT NOTE: PLEASE DON'T CONNECT THE USB LICENSE DONGLE UNTIL REQUIRED

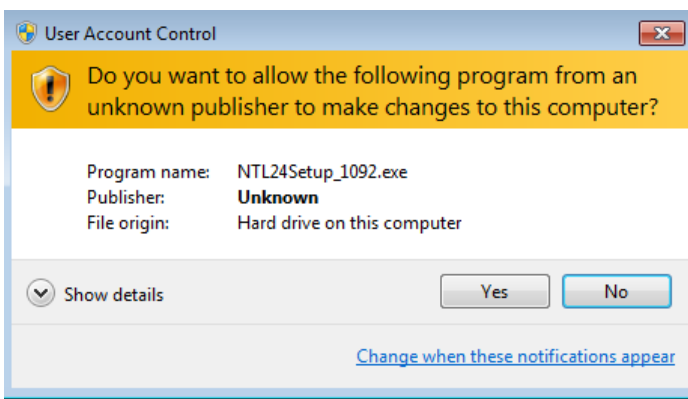
NOTE: if Nautilus is already installed on your computer, is advisable to make a backup of your data files before proceeding.

To setup Nautilus 2.4 on your computer, please follow these instructions:

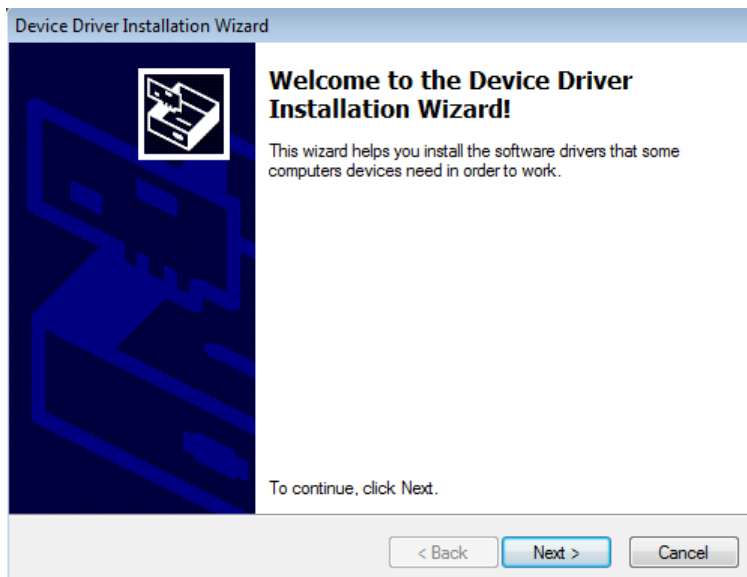
1. Insert the CD; if after some seconds it doesn't start automatically, select the Run command from the Windows Start Menu; in the "Open" textbox enter "X:\NTL24Setup.exe" (where X is the letter assigned to your CD-Rom reader) and press Enter

IF YOU ARE DOWNLOADING THE SETUP FROM THE INTERNET, CHOOSE "Save" WHEN PROMPTED BY THE BROWSER, THAN CHOOSE A LOCATION TO SAVE THE SETUP (i.e. a "Setup programs" folder inside your Documents folder), THEN AT THE END OF DOWNLOAD, DOUBLE CLICK ON THE DOWNLOADED FILE

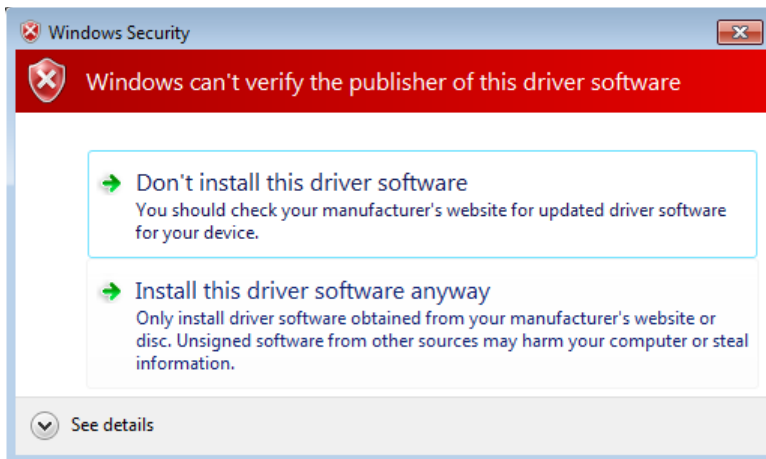
If a warning message advice you about the security risk of executing a program, just click YES



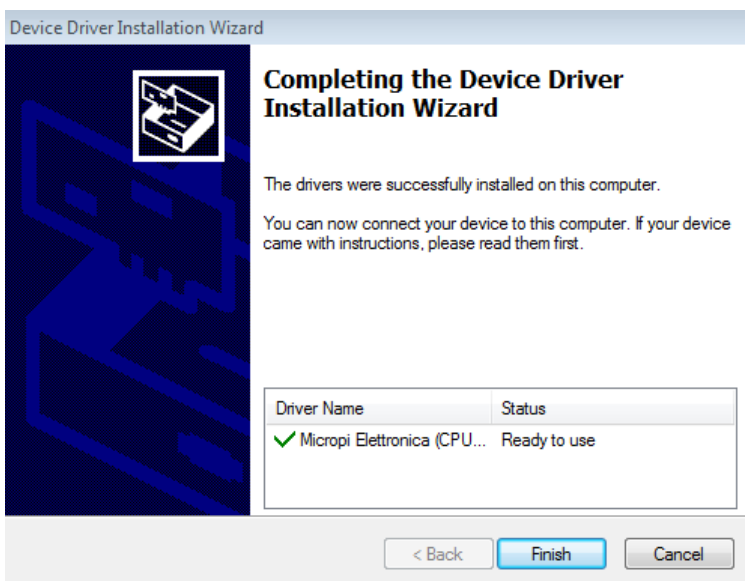
2. If needed by the system, the dongle driver will be setup. In the first "Device driver Installation wizard" screen, click Next



3. If a confirmation request for driver installation pops-up, click on the button to install the Driver Anyway



4. At the end of the Driver installation, you will receive a confirmation message. Click Finish



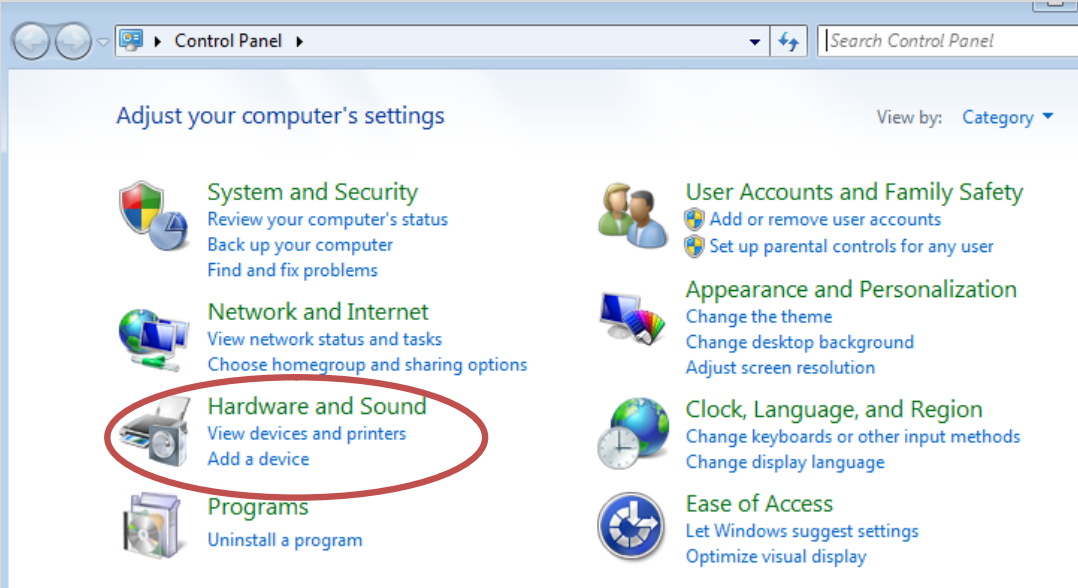
NOTE ONLY FOR WINDOWS 7 USERS

Windows 7 doesn't seem to automatically add the usb dongle to it's detected hardware, even after the driver setup succeeded. A manual hardware scanning is required, following these steps:

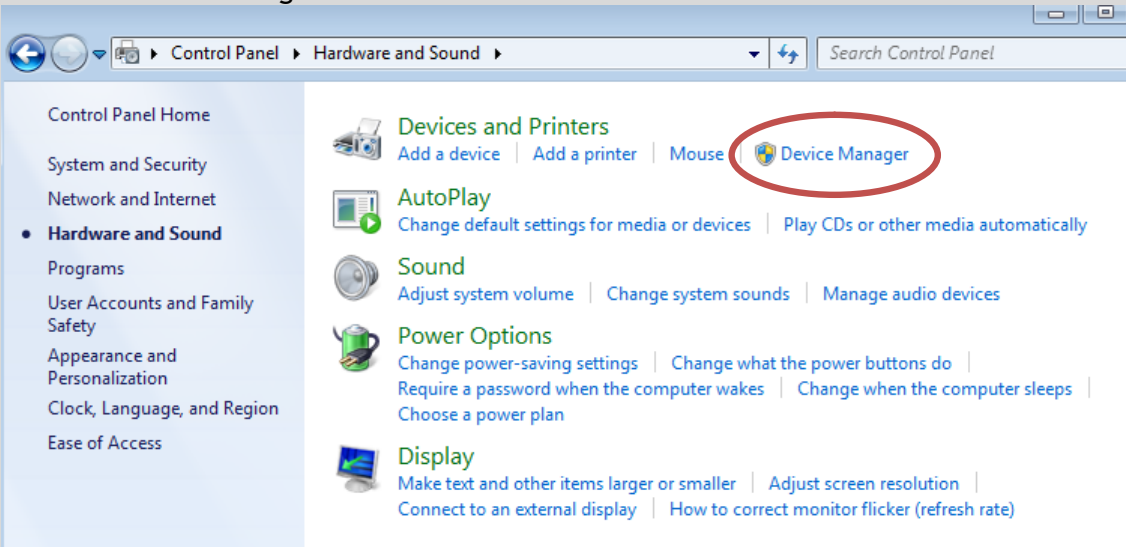
Insert the USB license dongle in an available USB port

Open Control Panel from the Start menu

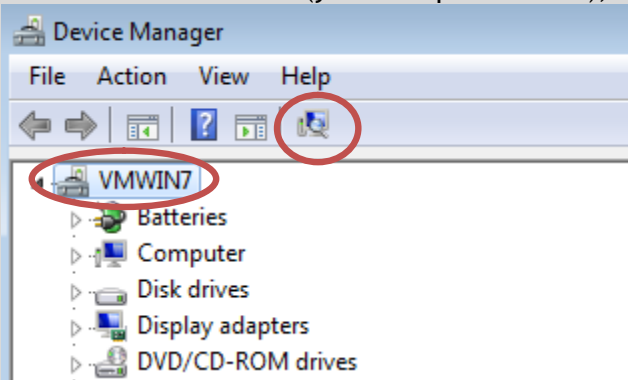
Click on Hardware and Sounds



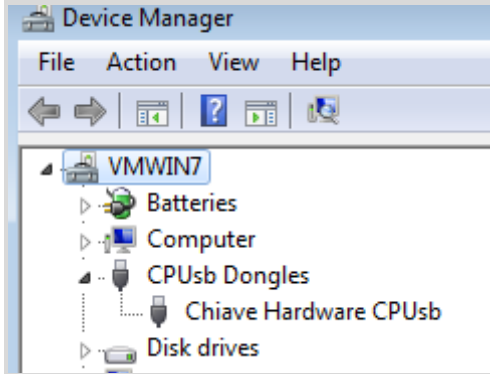
Click on Device Manager



Click on the root node (your computer name), and after that on the "Detect new hardware"

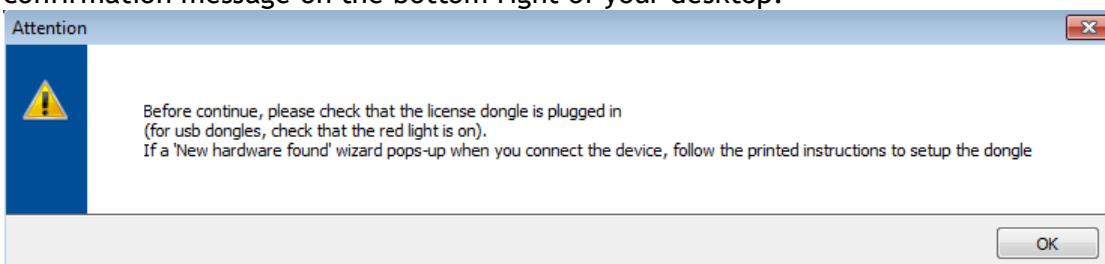


After a while Windows should detect your dongle, and list under the category “CPUsb dongles”



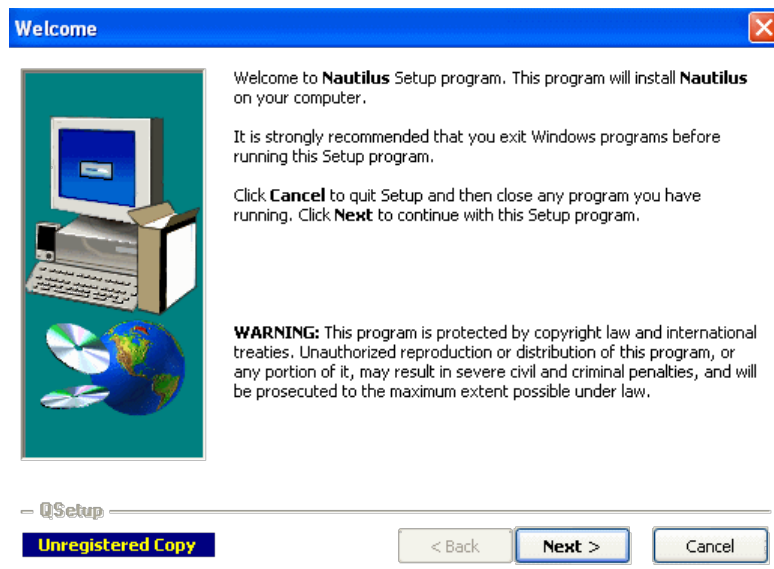
Close Control Panel

5. If not already done, as requested plug the USB license dongle in an available USB port. If it's the first time that the dongle is inserted, Windows automatically configure the driver and usually gives you a confirmation message on the bottom right of your desktop.

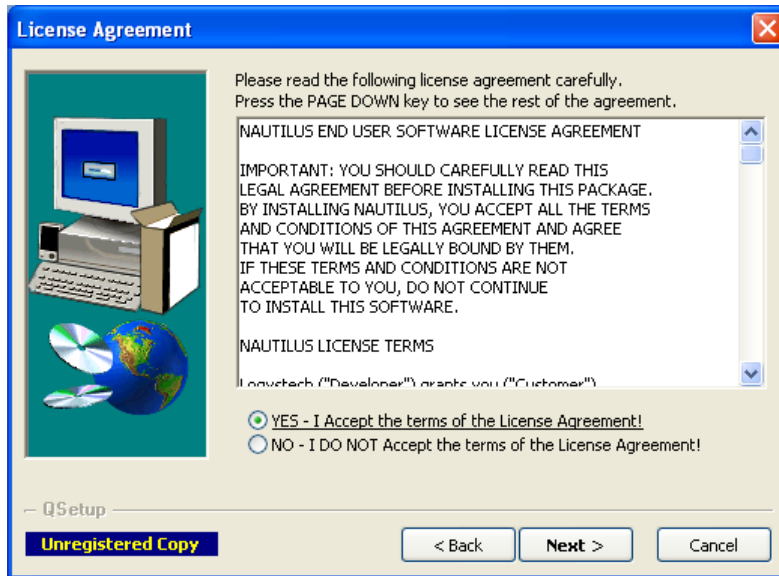


Anyway, wait until the little red light of your dongle lights up, and then click OK

6. In the “Welcome” dialog, click [Next]

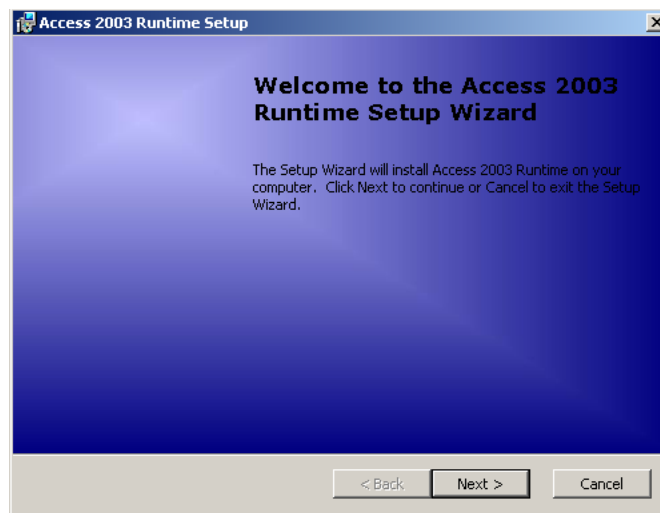


7. If a License Agreement is displayed, read it, select the “YES - I Accept...” option and click [Next]

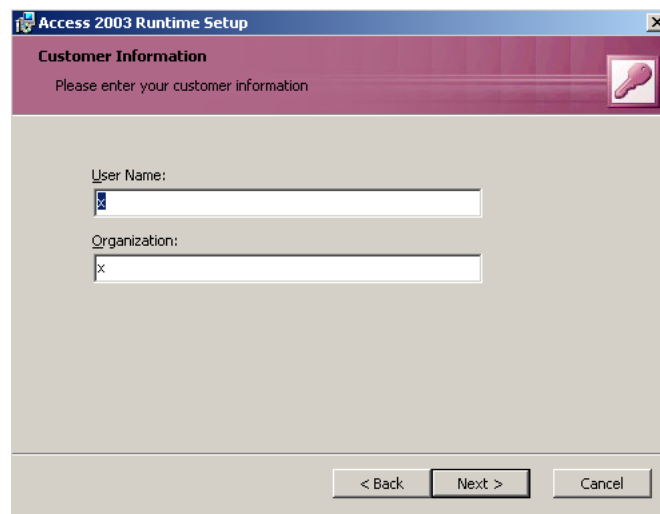


8. Only if your computer needs it, the Access 2003 Runtime setup is run. If this is the case, click [Next] in the "Welcome to the Access..." dialog:

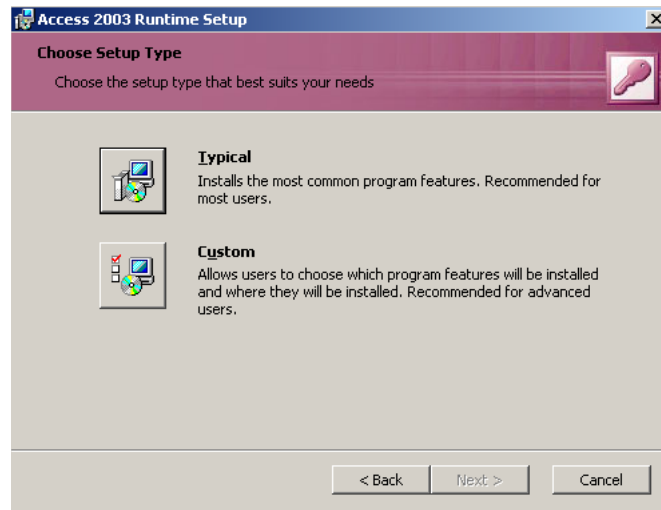
NOTE: if this dialog box doesn't appear, go ahead from paragraph 13



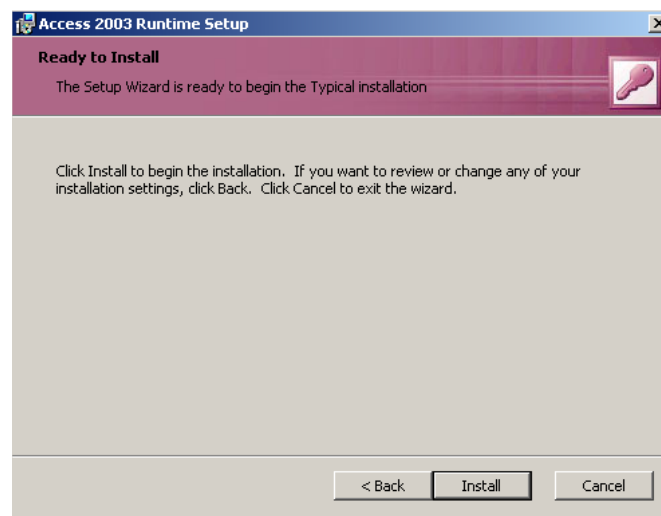
9. If you want, enter your name and organization (it's not needed) and click [Next]:



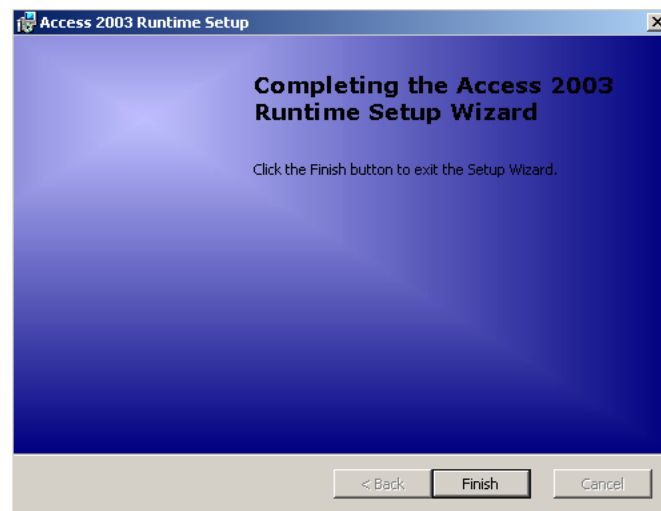
10. In the “Choose setup type” form, click on the [Typical] button:



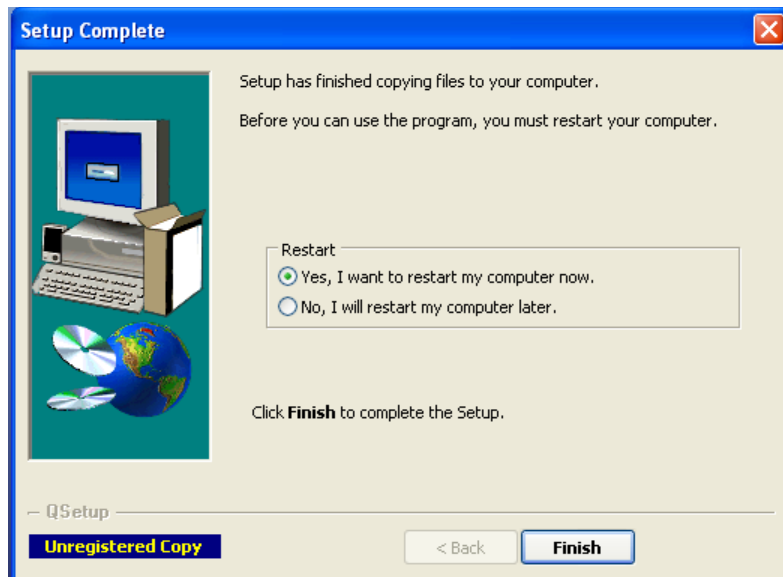
11. In the “Ready to Install” form, click on [Install]:



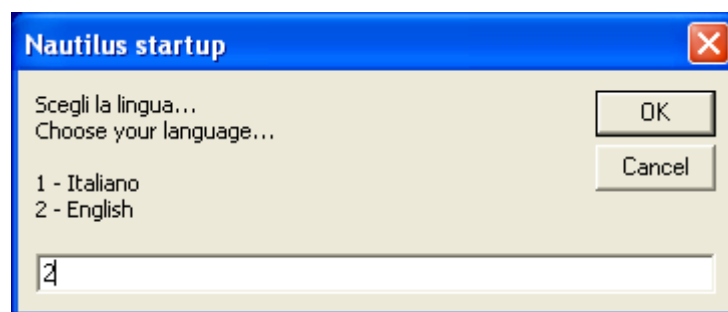
12. At the end of the Access 2003 Runtime setup, you will see a confirmation form; click [Finish]:



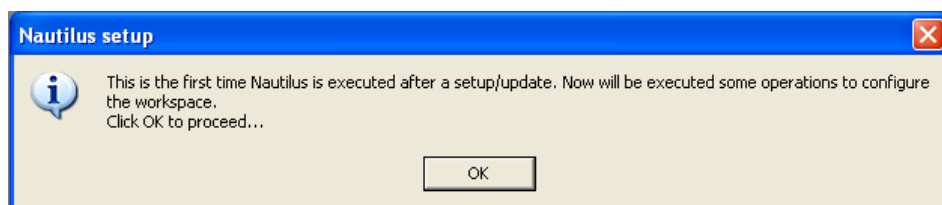
13. Now you will see the Setup Complete form. Click [Finish]
NOTE: if the setup advice you to reboot the computer, please do it (eject the CD if inserted)



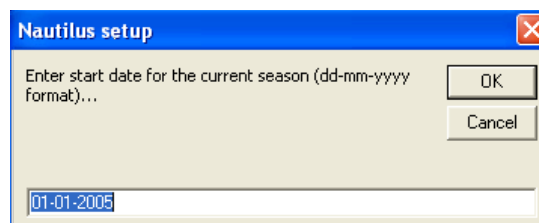
14. Start Nautilus 2.4, by double clicking the Nautilus icon on your desktop.
You will be asked to select your preferred language (you can change it in any moment even later).
Enter your selection and click [OK]



15. When the following message appears, click [OK]



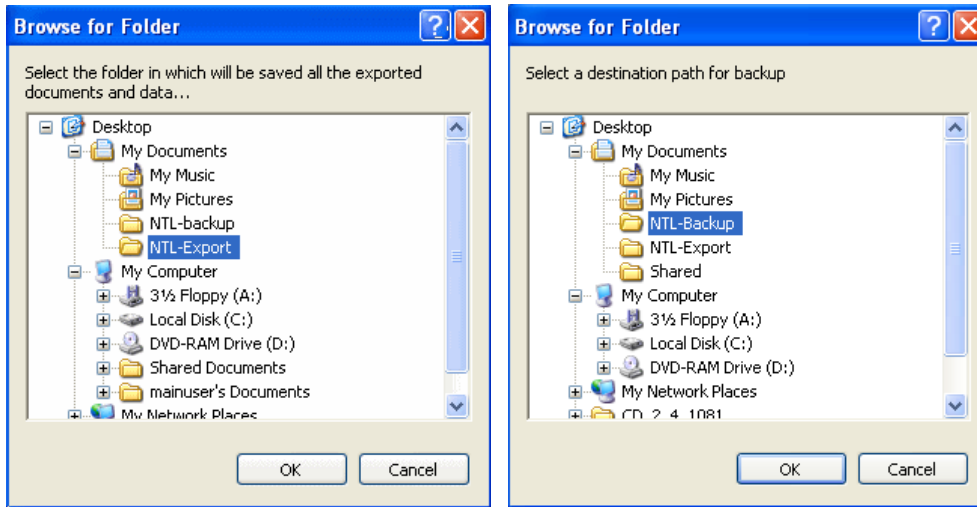
16. You will be prompted to insert a start date for the empty season that will be created (please insert a date even if you have a set of precompiled data files received with your Nautilus of saved in a backup):



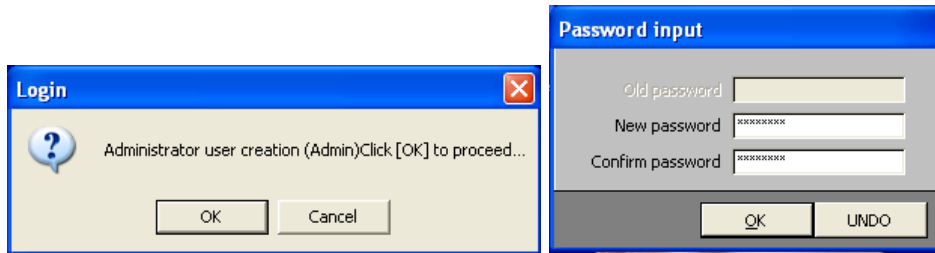
Proceed with [OK]

17. You will be prompted to select two folders: the first is used by all import/export functions, and the second one used to save backups.

NOTE: the best way is to create two dedicated folders in the Documents folder and use them, as in the picture.

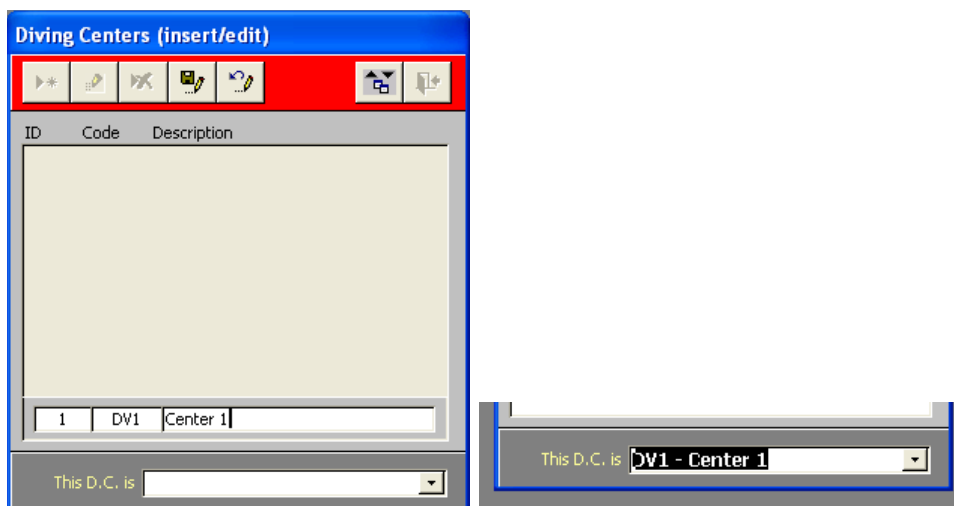


18. Click [OK] on the “Administrator creation” dialog, and enter a password for the created “Admin” user, which is the standard super-user that can never be deleted. Just enter a preferred password.



19. ONLY in the case that you have an Enterprise level license, you will be prompted to compile the list of your diving centers (if you have precompiled data files or a saved backup, just enter one record with whatever values).

Use the New button on the top-left of the form for entering each record, and save each one with the Save button. When you have finished inserting the records, select which center is the one managed with the computer where you’re installing



Congratulations !

The setup process is over, and you can start to work with your Nautilus.

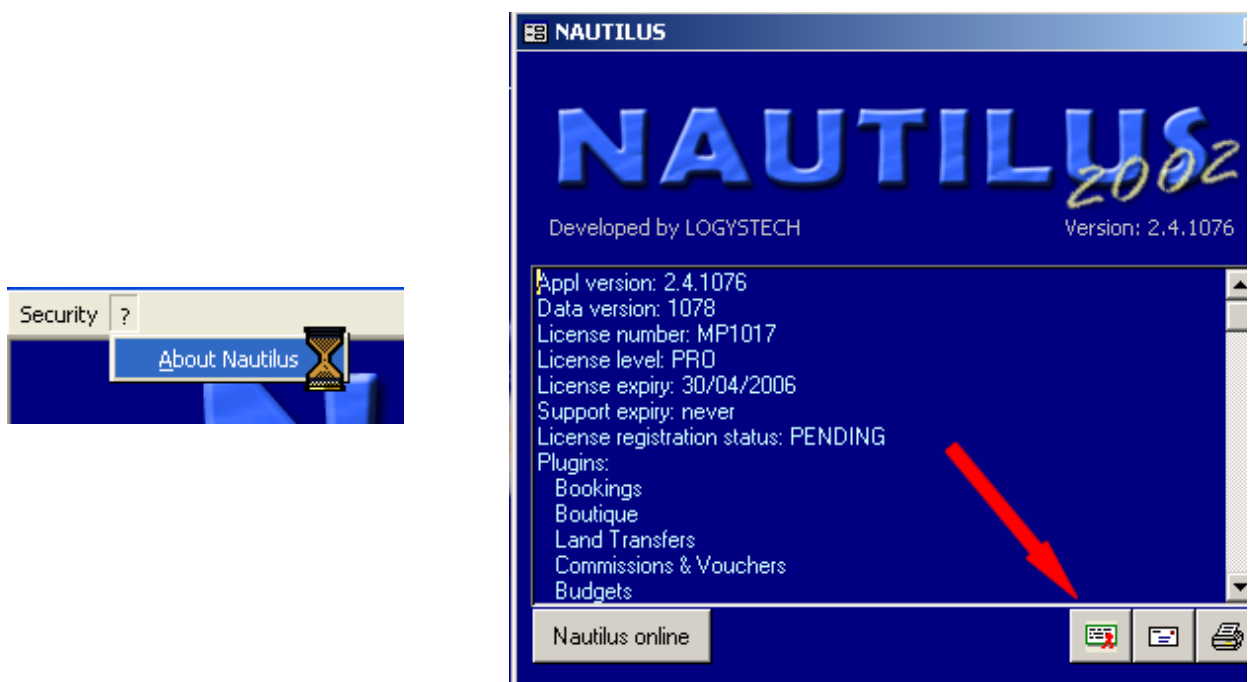
If you have bought the option to have the **initial data files** already compiled, or if you have installed Nautilus over a previous installation, and before proceeding you did a data backup, follow the steps in the “Restoring a backup or a precompiled database” section at the end of this document.

Registering your license

If it's the first time that you install your Nautilus software, you need to register the licenses that you've bought.

You have 30 days to do that, before the license is locked out, and in that case you need to contact the technical service to receive a special unlock procedure.

To check if you need to register, open the “About Nautilus” form (from the ? menù in the main menu bar), and check the “License registration status” value: if it says PENDING than it means that the connected dongle license needs to be registered.



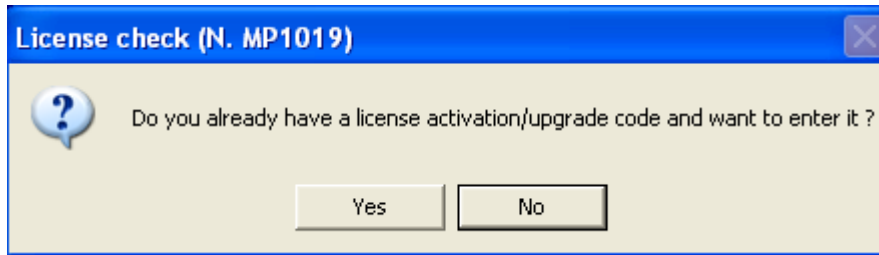
If you need to register, follow these steps:

- click on the license management button; Nautilus understands that you need to register, and gives you a confirmation message; click [OK]

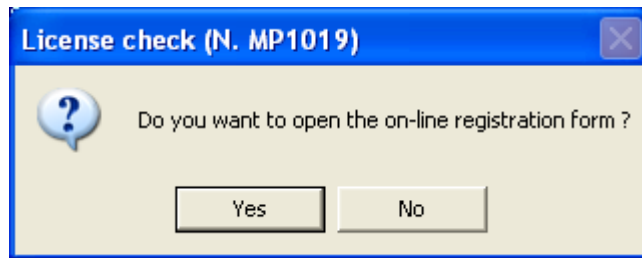


NOTE: if your license has a limited validity (for example because the license fee has not been completely payed yet), than you need to unlock it before registering; contact the technical service to receive the unlock code

- now, only if you ALREADY have a registration code for the license (maybe received by the technical service), click [Yes], otherwise simply click [No]



- if the computer on which you're working can connect to the Internet, click [Yes] in the next dialog



- confirm the next message, and your default browser will open the registration page

Nautilus license registration

Enter all field and click [Proceed]...

LICENSE N.	<input type="text" value="MP1019"/>
Possible other licenses to register (for the same dive center)	<input type="text"/>
	<input type="text"/>
	<input type="text"/>

Site data

Center / Site name

- Enter all the relevant informations and click on the [Send data] button at the end of the page. NOTE: if you are using more than one licenses in the same center (i.e. in a network), you can register them all together, simply entering the extra license numbers in the available textboxes at the top of the page (you can read the license number directly on the protection key)
- At the end of the process you'll receive a confirmation message (sent by email too) in which you can read the activation code/s for your license/s. Select and copy the code (or take note of it) and close the browser window.

Nautilus license registration

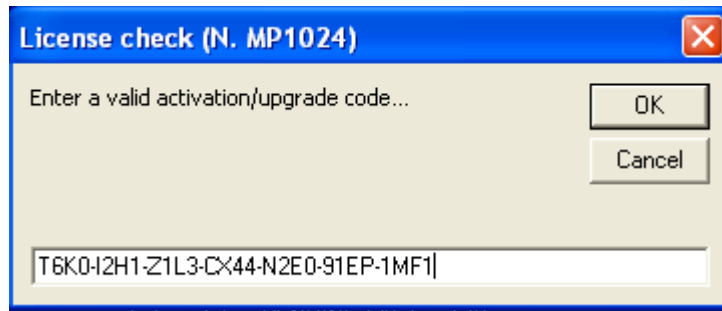
The following licenses have been correctly registered:

License: MP1024, Activation code: T6K0-I2H1-21L3-CX44-N2E0-91EP-1MF1

The reserved area access password for these licenses is: **p**

An email with all this information has been sent to mycenter@email.com

- Now, back in the Nautilus program, you'll see a dialog waiting for the activation code to be entered. Enter the one you took note before and click OK to confirm

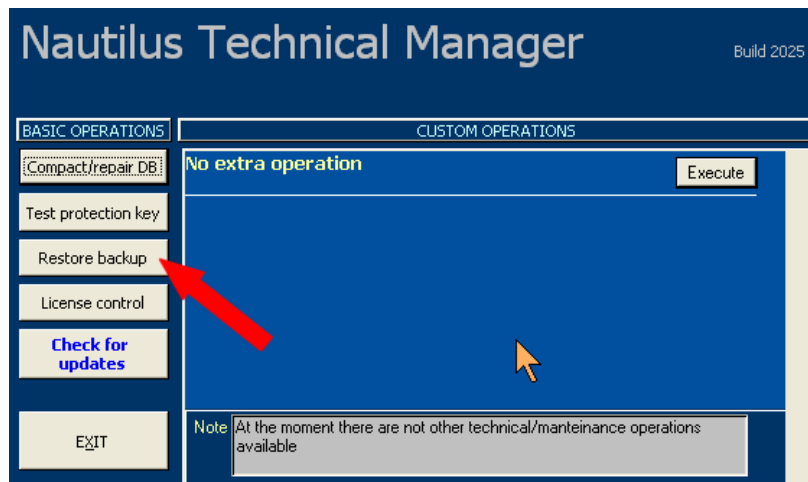


- now your license has been registered and activated

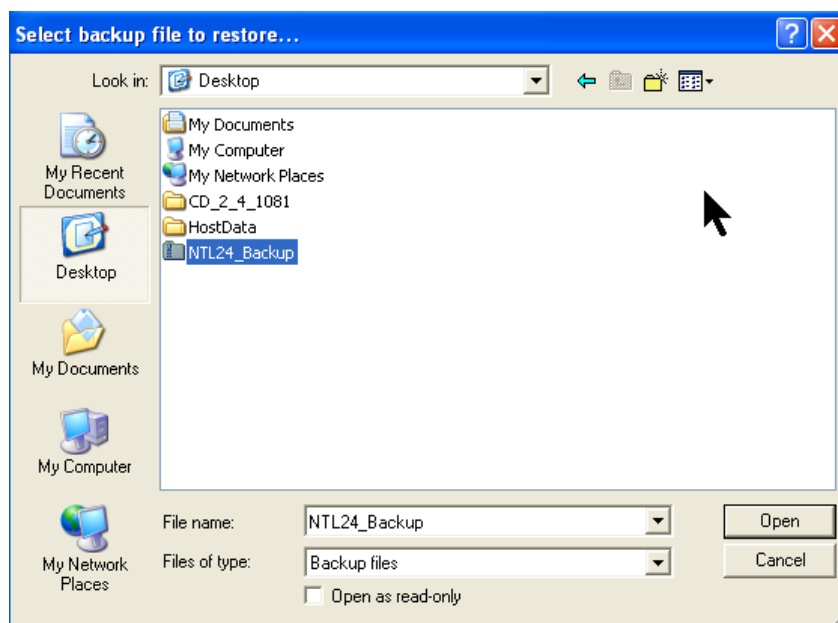
Restoring a backup or a precompiled database

If you have received a precompiled database bought with the program, or just have a database backup saved from a previous version of Nautilus, follow these instructions to restore it:

- Close Nautilus
- From the Start Menù, select Programs/Nautilus/Technical Manager
- Click on the [Restore backup] button



- Browse and select the saved backup file or precompiled file (in following example is saved on the desktop), and click [Open]



- At the end of the process (it may take some time) you will receive a confirmation message. Now you can close the Technical Manager and open again Nautilus

